



ALPHA TOF
Full Crate
Inspection System

Full Crate Inspection System - ALPHA TOF

Reliability, high safety standards, and low costs, with flexibility and easy handling. It improves quality and reliability by automating the inspection process, increasing efficiency, and reducing manual labor costs.

The system is versatile, inspecting up to 10,000 crates per hour with adjustable measuring distance, and enhances safety by avoiding the use of X-ray radiation.

The ALPHA TOF system is suitable for all top open packaging, such as cartons, crates, boxes, trays, and various container types.



Benefits

Improved quality & reliability

An automated inspection process guarantees a reduced risk of short shipment and improves your reputation.

Increased efficiency & cost savings

An automated end of line inspection helps you detect problems quickly and reduce costs for manual labour.

Enhanced safety

With out X-Ray radiation, you completely avoid any danger potential.



Benefits

Versatility

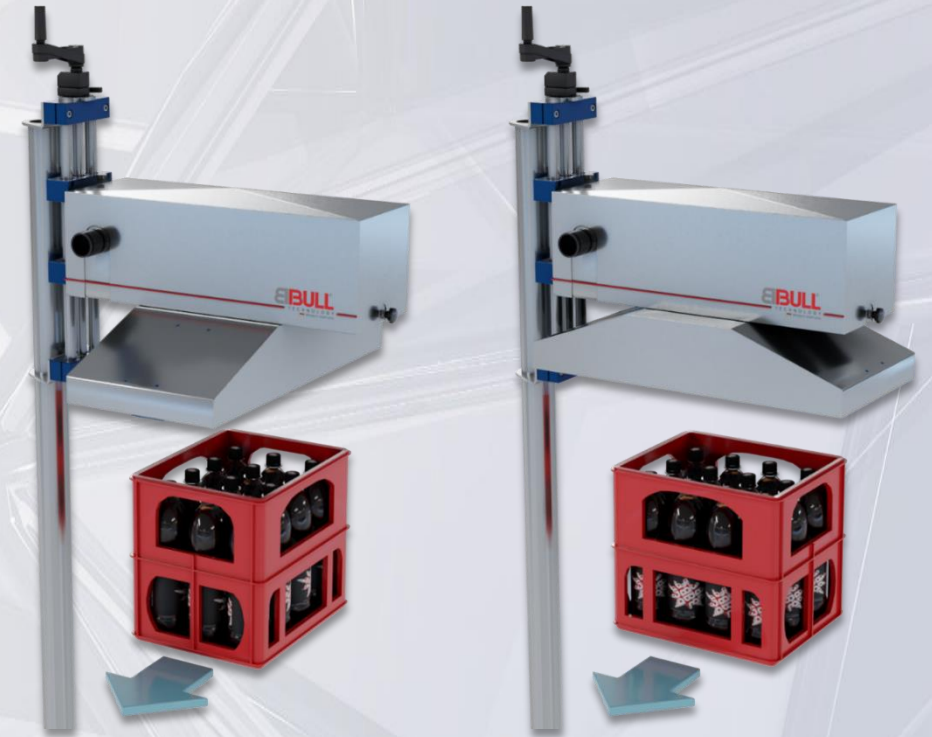
With a capability of inspecting 10,000 crates an hour and a adjustable measuring distance, this system provides maximum flexibility to fit your needs.

Data gathering & statistics

By inspecting every create, this system provides informative data about your packing, filling process and you actual production efficiency.

Greater peace of mind

Our system provides customers with confidence in their product quality, reducing stress and ensuring peace of mind.



Application

All top open packaging

E.G.

- Cartons, crates, boxes or trays
 - Beverage cans, tubes, or other similar containers
 - Bottles, jars, or other glass or plastic containers
 - Cartridges or other specialized containers



Detection

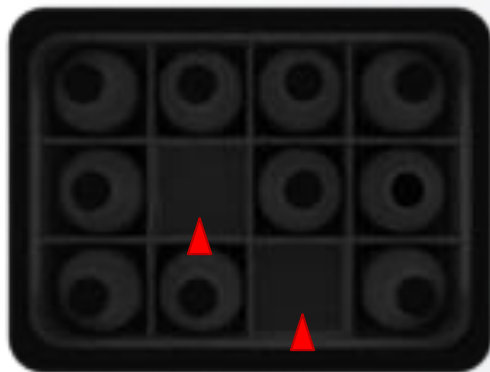
Full crate verification

- Missing containers
- Incorrectly placed containers



Process

- A extremely short infrared light flash followed by two extremely fast image captures generate 2 internal images of the inspection subject.
- The differences between those two digital images are used to calculate the distance between object and sensor.
- The distance values (brightness ratios) are converted into colour levels and displayed as a “Heightmap”.
- The evaluation is done via image analysis tools.



Features



Up to **10,000** containers per hour
Intelligent inspection bridges

- Works even if the control unit fails

Integrated tracking

Operation & visualisation via

- 10" display, PC (LAN), Tablet or smartphone (WLAN)

Easy teach-in

Advanced statistics

Connectivity with other BBULL systems

Multi-line concept

Cascadable- & expandable

Remote maintenance

Safety Measures

- Low power beam
- Automatic deactivation
- Optional shielding

Very compact design

Height adjustment with spindle/servo

Expansions

Code/ date inspection

- **IMAGE ORC**

Recommended Rejection System

- **CRATE PUSHER** – Pneumatic/Servo rejection system
- **FLEX SORTER** – Pneumatic rejection system





STRATEC CONTROL - SYSTEMS GmbH
Ankerstraße 73
75203 Königsbach-Stein
Telefon (+49) 72 32- 40 06- 0
Telefax (+49) 72 32- 40 06- 25
E-Mail: info@bbull.com
www.bbull.com

Take the Next Step! Request Further Information Today

Contact us to learn more about our system and how it can help your business succeed. Our team of experts is ready to answer any questions and provide you with a personalized solution.

Don't wait, make a call or send an email today and learn about the difference our system can make!

