



**IMAGE ECI**  
Empty Can  
Inspection System

# Empty Can Inspection System – IMAGE ECI

Implementing an empty can inspection into your production process is essential for **maintaining product quality, safety,** and regulatory compliance.

Detecting damage, contaminants, and improper imprints early in the process **minimizes waste and protects your brand reputation.**

Moreover, the system's easy installation and user-friendly features **ensure seamless integration** and **satisfied technicians**, making it a valuable addition to any production line.



# Benefits

---

## Quality assurance

Ensure high-quality products by detecting damage or contamination on cans, protecting brand reputation and increasing customer satisfaction.

## Efficiency and productivity

Inspect 140,000 cans per hour, reducing downtime, increasing throughput, and lowering costs.

## Improved accuracy

Detect small imperfection, contaminations and icons or codes. With dedicated cameras optics and illuminations, for every important part of the can.



# Benefits

---

## Regulatory compliance

Maintain food safety and quality standards, avoiding fines and penalties for non-compliance.

## Cost savings

Minimize waste and product recalls by detecting faulty cans early, leading to significant savings.

## Customization

Opt for a tailored system to focus on specific inspection areas, enhancing efficiency and productivity.





# Application

---

## Beverage/food/other cans

- Standard, sleek, slim & 8 oz. aluminium cans
- Steel cans
- Composite cans
- Shaped aluminium cans
- Widget cans
- Standard, easy-open, peel-of lid steel food cans
- Sanitary cans
- Metalized film cans
- Ring-pull cans
- Aerosol cans
- Oval-shaped food cans
- Rectangular food cans



# Detection

---

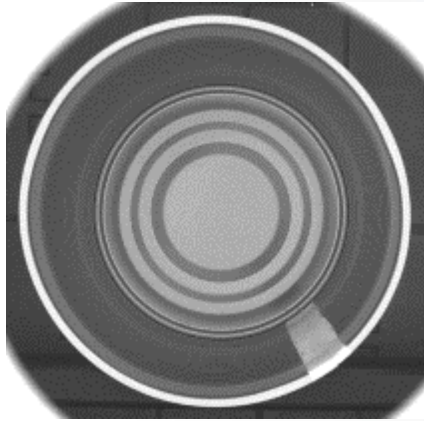
- Flange
- Top plate inspection / correct top plate (on three part cans)
- Deformation / roundness
- Bottom contamination
- Body (dents, contamination)
- Options
  - with date code inspection
  - with external sidewall inspection



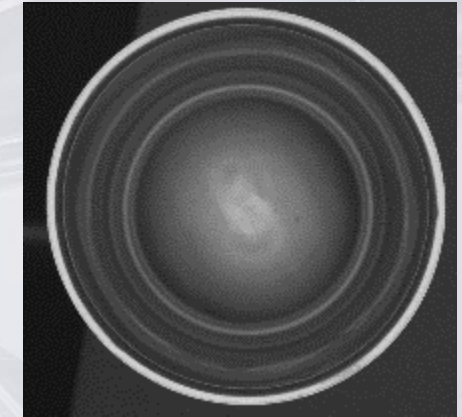
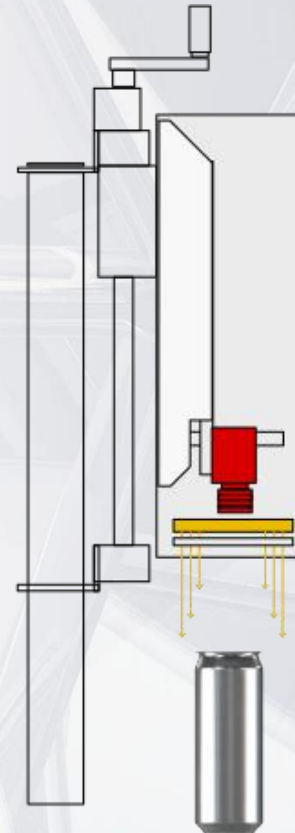
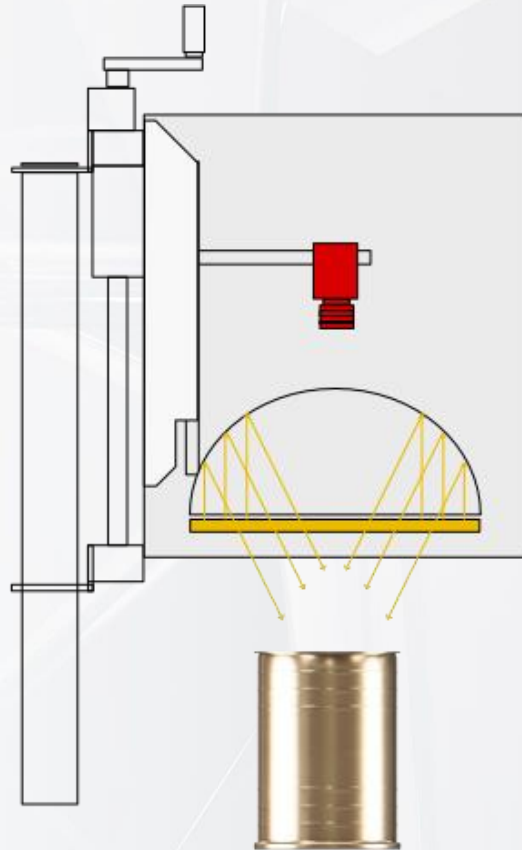
# Process

**High performance camera takes an image of every can using a ring-light illumination for even illumination.**

- Diffusor plane for beverage cans
- Diffuse dome for food cans



Camera image  
food can



Camera image  
beverage can



# Features

---



Up to **140,000** cans per hour

Integrated tracking

Operation & visualisation via

- 21" display

Easy teach-in

Advanced statistics

Connectivity with other BBULL systems

Multi-line concept

Cascadable- & expandable

Remote maintenance

Compact design

Simultaneous inspection of the bottom & details of the flange



# Expansions

---

## Date Print Inspection

- **IMAGE ORC**

## Recommended Rejection System

- **PUSHER** – Pneumatic/Servo rejection system
- **FLEX SORTER** – Pneumatic rejection system





**STRATEC CONTROL - SYSTEMS GmbH**

Ankerstraße 73

75203 Königsbach-Stein

Telefon (+49) 72 32- 40 06- 0

Telefax (+49) 72 32- 40 06- 25

E-Mail: [info@bbull.com](mailto:info@bbull.com)

[www.bbull.com](http://www.bbull.com)

## **Take the Next Step! Request Further Information Today**

Contact us to learn more about our system and how it can help your business succeed. Our team of experts is ready to answer any questions and provide you with a personalized solution.

Don't wait, make a call or send an email today and learn about the difference our system can make!

