



BBULL IMAGE BK
Threaded Flange Inspection

PRODUCT DESCRIPTION



BBULL IMAGE 120 (Threaded flange)

Multi-camera system for detecting faults on aluminum ROPP screw caps

GENERAL

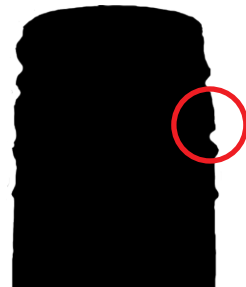
- Multi-camera system (3 CMOS cameras with resolution up to 1936x1216 pixels per camera)
- closure is 3x shown in profile
- each image is checked for sufficient thread depth, insufficient threads are in the image as fault
 - adjustable thread depth > 0.6 mm
- faulty bottle will be rejected with following rejection system

APPLICATIONS (basic equipment):

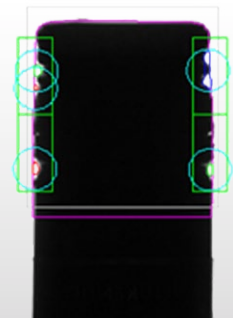
- missing caps
- to high-closures
- inclined caps
- missing threaded flange
- incomplete threaded flange
- to weak shaping of threaded flange > 0,6 mm
- single tooth with threaded flange > 60°
- damaged safety ring > 60°
- demolition of safety ring
- crushed closures

Optional (additional hardware required):

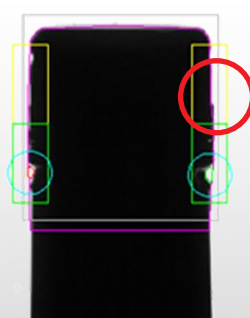
- fill high control
- label inspection
- OCR / OCV
- capper management



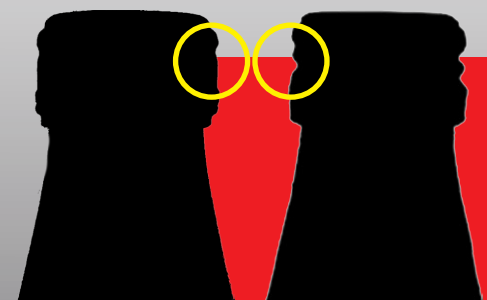
Single tooth



Thread ok



Thread failure



Thread is missing



BBULL IMAGE 360 COMPACT (Threaded flange)

Multi-camera system for detecting faults on aluminum ROPP screw caps

GENERAL

- Multi-camera system (4 CCD cameras with resolution up to 2452x2056 pixel per camera)
- closure will be 4x recorded and generates a 360° complete picture in front view
- each image is checked for sufficient embossing depth, insufficient embossings are in the image as faulty displayed
→ adjustable embossing depth > 0.6 mm
- faulty bottle will be rejected with following rejection system

APPLICATIONS (basic equipment):

- missing caps
- to high-closures
- inclined caps
- missing threaded flange
- incomplete threaded flange
- single tooth with threaded flange > 60°
- damaged safety ring
- demolition of safety ring
- burst open safety ring
- scratches, dents, cracks
- wrong closure color (logo side)

Optional (additional hardware required):

- fill high control
- label inspection
- OCR / OCV
- capper management



Burst open safety ring



Incomplete threaded flange



Outburst



Demolition of safety ring



Safety ring break



THREADED FLANGE INSPECTION

Cause of failure:

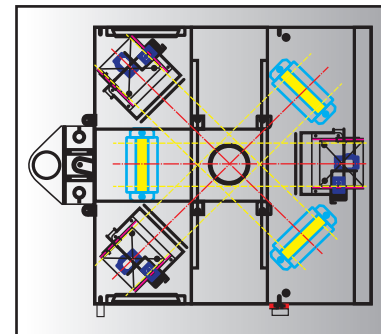
- poorly maintained embossing tools
- faulty batches of closures and bottles
- poor thread quality of the bottles
- incorrectly setup of drawing depth

Result:

- risk of injury
- leakage of bottles
- difficulty in opening the bottle
- visual defects
- mildew

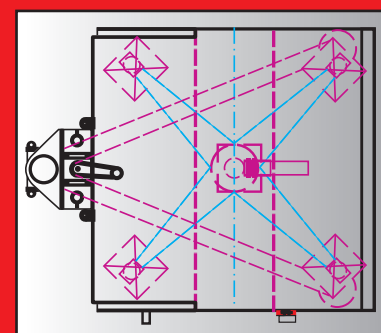
BBULL IMAGE 120

Equipment performance in bottles per hour:	_____ 50.000
Bottle diameter in mm:	_____ max. 120
Camera:	_____ 1 x CMOS camera 2 x BW cameras
Illumination:	_____ LED, background illumination
Dimensions inspection bridge l x w x h in mm:	_____ 600 x 600 x 390
Spindle height adjustment in mm:	_____ +/- 140
Protection inspection bridge:	_____ IP 65
Processing system:	_____ BBUL 500 / BBULL 5000
Inspection software:	_____ Windows 7 embedded



BBULL IMAGE 360 COMPACT

Equipment performance in bottles per hour:	_____ 50.000
Bottle diameter in mm:	_____ max. 120
Camera:	_____ 4 x color cameras
Illumination:	_____ LED reflected illumination
Dimensions inspection bridge l x w x h in mm:	_____ 600 x 600 x 390
Spindle height adjustment in mm:	_____ +/- 140
Protection inspection bridge:	_____ IP 65
Processing system:	_____ BBULL 5000
Inspection software:	_____ Windows 7 embedded



STRATEC CONTROL-SYSTEMS GmbH • Ankerstrasse 73 • 75203 Königsbach-Stein
 Telefon (+49) 72 32- 40 06- 0 • Telefax (+49) 72 32- 40 06- 25
www.bbull.com