



BBULL FORMAT

Bottle Format Detection

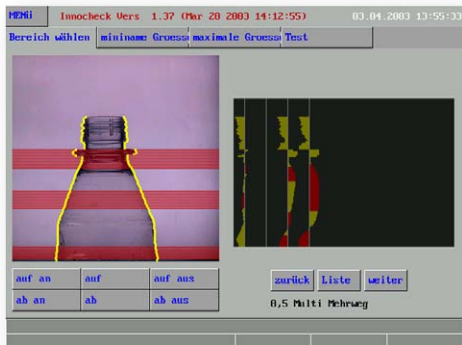
PRODUCT SPECIFICATION



General

The Bottle format detection consist of a fast imaging system on the basis of modern CCD- cameras. The automatic trigger function replaces an additional external trigger signal.

The system supports a minimal gap bottle flow as well as changing conveyor speed. The registration of the bottle con-tour is done by means of the TEACH-IN. The counter is evaluated within the select bottle area.



Special Features

- 30 bottles and more can be imported
- 5 and more distribution systems can be triggered
- automatic outline detection by TEACH-IN function
- user friendly user interface
- operation via touch-screen
- display of the output values
- telecentric optics, so the distance between bottle and camera is not relevant
- the image maps the complete bottle, so no height adjustment is necessary
- stick out labels are masked by the software
- bottle sequence without gaps is possible
- compact design
- IP 65 protection with air conditioner

The system consist of the following components (integrated in a high-grade steel housing)

- LED lighting unit
- CCD matrix camera
- evaluation unit, industrial PC with integrated touchscreen
- colour LC display (TFT)



Technical Data

Continuous sorting operation: _____ up to 65.000 b/h
Control unit measurements (WxHxD in mm): _____ 520x1700x400
Sensor bridge measurements (WxHxD in mm): _____ 620x1580x240
Evaluation unit voltage requirement: _____ 110-250 VAC

BBULL PC 5000

STRATEC CONTROL-SYSTEMS GmbH • Ankerstrasse 73 • 75203 Königsbach-Stein
Telefon (+49) 72 32- 40 06- 0 • Telefax (+49) 72 32- 40 06- 25 www.bbull.com

BBULL CENTRO STRATEC SYMPLEX
INFORMATIK & INDUSTRIE ELEKTRONIK KONTROLLSYSTEME CONTROL-SYSTEMS VISION SYSTEMS